

# Kempsford

(with Whelford, Dunfield and Dudgrove)

## Parish Newsletter

### September 2025



*Kempsford village fete*



- Food*
- Raffle*
- Craft stalls*
- Dog show*
- Games*
- Car Boot*
- Sporting competitions*

**High Street, Kempsford**

### VILLAGE FETE SPORTS 2025



**KEMPSFORD VILLAGE FETE**  
**27 SEPTEMBER 25**  
**12-3PM**

FOOTBALL SHOOT OUT COMPETITION  
WIFFLE BALL COMPETITION

REGISTER FOR BOTH ON THE FIELD AT 12NOON

**PRIZES TO BE WON!!**

**12 NOON- 3PM | 27 SEPTEMBER 25 | FREE ENTRY**

## FUN DOG SHOW



**BEST PUPPY 0-2 YEARS**  
**BEST VETERAN 7+ YEARS**  
**MOST HANDSOME/ PRETTIEST**  
**WAGGIEST TAIL**

**BEST JUNIOR HANDLER(BOYS & GIRLS)**  
**DOG JUDGE WOULD MOST LIKE TO TAKE HOME**  
**WINNERS ENTERED INTO BEST IN SHOW - SPONSORED BY KAZ KARE**

FETE 12NOON - 3PM  
DOG SHOW 1PM  
ENTRY ON THE DAY FROM 12 NOON. £2 PER CLASS

# Parish Diary

## SEPTEMBER

Wed	3rd	5.00pm - 7.30pm	Kempsford Village Hall	Chippy Van
Sun	7th	9.30am	St Mary's Kempsford	Holy Communion
Sun	7th	3.00pm - 5.00pm	St Mary's Kempsford	Open Day
Mon	8th	5.00pm - 7.30pm	Kempsford Village Hall	Pizza Van
Thurs	11th	12.00pm - 2.00pm	Kempsford Village Hall	Community Café
Thurs	11th	7.00pm - 10.00pm	Kempsford Village Hall	Darts (davis.william68@yahoo.com)
Sat	13th		River Thames Litter Pick & Water Test - Contact Karen Shaw 07989857435	
Sun	14th	9.30am	St Mary's Kempsford	Service of the Word
Mon	15th	7.00pm	Kempsford Village Hall	Parish Council Meeting
Mon	15th	7pm for 7.30 start	Memorial Hall, Lechlade	Lechlade History Society Talk - Place-names/Archaeology in/around Gloucestershire
Wed	17th	5.00pm - 7.30pm	Kempsford Village Hall	Chippy Van
Fri	19th	3.00pm - 6.00pm	Memorial Hall, Lechlade	Strengthening Communities event Email: community.support@cotswold.gov.uk
Sun	21st	9.30am	St Anne's Whelford	Service of the Word
Sun	21st	4.00pm	St Mary's Kempsford	Family Service
Mon	22nd	5.00pm - 7.30pm	Kempsford Village Hall	Pizza Van
Mon	22nd		OCTOBER NEWSLETTER COPY DEADLINE	
Thurs	25th	7.00pm - 10.00pm	Kempsford Village Hall	Darts (davis.william68@yahoo.com)
Sat	27th	12.00pm - 3.00pm	High Street, Kempsford	Village Fete
Sun	28th	9.30am	St Mary's Kempsford	Harvest Festival & Holy Communion

## REGULAR EVENTS

Mondays	10am - 11am	Kempsford Village Hall	Rosie's Pilates Plus
Mondays & Wednesdays		Fairford Hospital	Friends of Fairford & Lechlade Communities Edna Dawes Lunch Club Tel:07713 607106
Tuesdays	9.00am - 10.00am	Kempsford Village Hall	Boogie Bounce (Jen 07749 014192)
Tuesdays	10.00am - 11.00am	Kempsford Village Hall	Clubbercise (Jen 07749 014192)
Tuesdays	7.00pm - 9.00pm	Kempsford Village Hall	Short Mat Bowls (treasurerkempsford@gmail.com)
Wednesdays	5.00pm - 7.00pm	Kempsford Village Hall	Youth Club (Term time only)
Thursdays	12.00 - 2.00pm	Kempsford VH Garden	Community Garden open (weather permitting)
Thursdays	12.00 - 2.00pm	Kempsford Village Hall	Post Office
Fridays	6.00pm - 7.00pm	Kempsford Village Hall	Zumba

## Kempsford Village Hall – September Events

### Regular Events

Mon	Pilates <a href="mailto:rosie@rosiehowenutrition.com">rosie@rosiehowenutrition.com</a>  Pizza Van 8 <sup>th</sup> & 22 <sup>nd</sup> <a href="mailto:solelunapizza3@gmail.com">solelunapizza3@gmail.com</a>	10:00am – 11:00am   5:00pm – 7:30pm
Tue	Boogie Bounce Clubbercise Jen 07749 014192  Short Mat Bowls <a href="mailto:treasurerkempsford@gmail.com">treasurerkempsford@gmail.com</a>	9:00am – 10:00am 10:00am – 11:00am   7:00pm – 9:00pm
Wed	Youth Club Chippy Van 3 <sup>rd</sup> & 17 <sup>th</sup> <a href="mailto:info@thecotswoldchippy.co.uk">info@thecotswoldchippy.co.uk</a>	5:00pm – 7:00pm 5:00pm – 7:30pm
Thur	Post Office  Darts 11 <sup>th</sup> & 25 <sup>th</sup> <a href="mailto:davis.william68@yahoo.com">davis.william68@yahoo.com</a> Community Café 11 <sup>th</sup>	12:00pm – 2:00pm   7:00pm – 10:00pm  12:00 – 2:00pm

### Other Upcoming Events

27 <sup>th</sup> Sept	Village Fete Followed by <b>women's</b> Rubby World Cup in the hall if England are in the final	12:00pm – 3:00pm  4:00pm - TBC
4 <sup>th</sup> Oct	Bingo	5:30pm for eyes down at 6:00pm
11 <sup>th</sup> Oct	Race Night	7:00pm – 10:00pm
18 <sup>th</sup> Oct	Live Music Night (Church Fund Raiser)	7:00 – 10:30pm
1 <sup>st</sup> Nov	Barn Dance. £10 per ticket. £30 for family of four (2 adults, 2 children) Refreshments available. First drink free.	7:00pm – 10pm



## KEMPSFORD COMMUNITY CAFÉ

**Thursday 11<sup>th</sup> September 12 – 2pm**

Homemade Soup and Bread, Delicious Cakes,  
Fresh Coffee and Speciality Teas.

All welcome,

If you haven't been before you're missing a treat!

### Church Services for Kempsford & Whelford – September

Sunday 7 <sup>th</sup>	9.30am	Holy Communion, Kempsford
	3 - 5pm	Open Day, Kempsford
Sunday 14 <sup>th</sup>	9.30am	Service of the Word, Kempsford
Sunday 21 <sup>st</sup>	9.30am	Service of the Word, Whelford
	4pm	Family Service
Sunday 28 <sup>th</sup>	9.30am	Harvest Festival & Holy Communion, Kempsford all Together

*For services across the Five Villages, please see the noticeboard at church*

### Open Day at St Mary's

Have you ever walked past St Mary's and wondered what's inside? Or maybe you've been coming for years but never climbed the bell tower or heard the tales behind some of its treasures? Well, here's your chance!

On 7<sup>th</sup> September, St Mary's will be celebrating our **Patronal Festival** – the special day each year when we give thanks for the saint our church is named after and for us, it's St Mary, the mother of Jesus. To mark the occasion, we're holding an **Open Day**, and everyone in the village is warmly invited.

There'll be something for everyone:

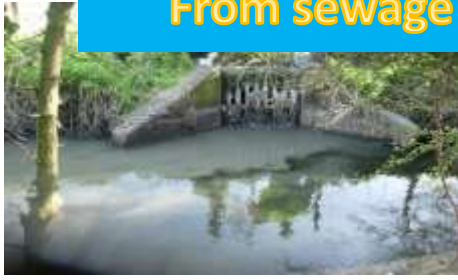
- A family quiz trail taking you back in time
- Tours of the church and displays about its history
- The chance to go up the bell tower (if you're feeling adventurous & are fit!)
- Refreshments and a friendly welcome
- A sneak peek at our exciting new re-development plans for the future

Whether you're a history buff, love exploring hidden corners, or just fancy a slice of cake and a cuppa, do come along. St Mary's isn't just the church in the village – it's **your church**, and we'd love you to get to know it better.

So come along on Sunday 7<sup>th</sup> 3-5pm. All are welcome and a warm welcome awaits!



**From sewage dump to safe to swim in again**



## **SOUTH COTSWOLD RIVER THAMES LITTER PICK & WATER QUALITY TEST**

**Saturday 13 September 2025**

*Help raise awareness of the pollution from litter along our River Thames and from chemicals/sewage that are dumped or leached into it. Join the volunteers on Saturday 13 September 2025*

- *To collect litter along a stretch the Thames Path near you (between the Source of the River Thames to Lechlade)*
- *To test the quality of the River Thames water at a specific point on your stretch; as part of the EarthWatch Europe Water Blitz.*

Our **South Cotswold MP Dr Roz Savage MBE** is campaigning to stop sewage dumping and clean up our rivers. The River Thames, from its Source near Kemble to Lechlade, lies in her constituency. She's meeting us by the River in Lechlade on the day, to talk about her campaign to stop sewage dumping in the River Thames.

For more information about the South Cotswold River Thames Litter Pick & Water Quality Test on Saturday 13 September 2025, please contact Karen by text on 07989 857435 or by email at shawkm30@gmail.com.



Further information is available on the Facebook page:-

**River Thames Litter Pick & Water Test - South Cotswold**



*Gifts & More Craft Fair 2025, Kempsford*

# Kempsford Parish Council

## Notice of conclusion of audit

Annual Governance & Accountability Return for the year ended 31 March 2025

Sections 20(2) and 25 of the Local Audit and Accountability Act 2014

Section 16 of the Accounts and Audit Regulations 2015 (SI 2015/234)

	Notes
<p>1. The audit of accounts for Kempsford Parish Council for the year ended 31 March 2025 has been completed and the accounts have been published.</p> <p>2. <b>The Annual Governance &amp; Accountability Return including the auditor's</b> certificate and opinion is available for inspection and copying by any local government elector of the area of Kempsford Parish Council on application to:</p> <p>(a) Mrs Teresa Griffin (Clerk &amp; RFO) Kempsford Parish Council Winterwood, Whelford, Fairford, Glos. GL7 4EB Tel: 07818626158 Email: <a href="mailto:clerk@kempsfordparishcouncil.gov.uk">clerk@kempsfordparishcouncil.gov.uk</a></p> <hr/> <p>(b) Monday to Friday, 9am – 5pm (by appointment)</p> <hr/> <p>3. Copies will be provided to any local government elector of the area on payment of £0.10p per sheet for each copy of the Annual Governance &amp; Accountability Return.</p>	<p>This notice and Sections 1, 2 &amp; 3 of the AGAR must be published by 30 September. This must include publication on the smaller <b>authority's website</b>. The smaller authority must decide how long to publish the Notice for; the AGAR and external auditor report must be publicly available for 5 years.</p> <p>(a) Insert the name, position and address of the person to whom local government electors should apply to inspect the AGAR</p> <p>(b) Insert the hours during which inspection rights may be exercised</p> <p>(c) Insert a reasonable sum for copying costs</p> <p>(d) Insert the name and position of person placing the notice</p>
Announcement made by: (d) Teresa Griffin (Clerk & RFO)	(e) Insert the date of placing of the notice

Date of announcement: (e) 24<sup>th</sup> August 2025

Please see website—[www.kempsfordparishcouncil.gov.uk](http://www.kempsfordparishcouncil.gov.uk) for more information

## **ST MARY'S KEMPSFORD WITH ST ANNE'S WHELFORD**

Contact details for the parish

Rev Catie - 01285 671490 or [Rev.catie@gmail.com](mailto:Rev.catie@gmail.com)

Lay Preachers – Rob Mitchell 01285 712821 & Elizabeth Emberson [dizzylizzie@sky.com](mailto:dizzylizzie@sky.com)

Church wardens: Keith Howlett - 01285 712268 [churchwarden@kempsford.net](mailto:churchwarden@kempsford.net)

or there is a Facebook page The 5 Villages

### **Curate Catie's Monthly Musings for September**

Dear friends,

I hope you have had a good summer, whether that meant time away, visits with family and friends, or simply enjoying the slower pace that the long days allow.

September feels a bit like a fresh start, doesn't it? As schools open their doors, I think of the children starting school for the first time, those beginning a new year and those making the big step into secondary school. And of course, those moving to University & College, often living away from home for the first time. We hold them, their teachers, and families in our prayers as they settle into new routines.

September is one of my favourite months – we (hopefully!) lose the searing heat, but still enjoy sunny days. The mornings feel fresher, the trees begin to glow with colour, and usually the fields show the fruit of months of growth and care; yet we know that this year has been especially hard for farmers, with the summer's heatwave and lack of rain bringing real challenges to crops and livestock. As we begin Harvest celebrations, may our thanksgiving be joined with prayer and support for all who work the land under such pressure.

And linked with this, at the start of September we enter the Season of Creation - a reminder of our responsibility to care for God's earth. Later in the month comes Michaelmas, when we give thanks for St Michael and all the angels who watch over us, and on 21st September we celebrate St Matthew the Apostle. His calling reminds us that God can use each of us, whatever our story, for the work of the Kingdom. And look out in the newsletter about our Open Day on 7<sup>th</sup> September!

As this new season unfolds, may we notice the beauty around us, give thanks for the summer that has passed, and look with hope for what lies ahead.

With every blessing,

Rev. Catie

[Rev.catie@gmail.com](mailto:Rev.catie@gmail.com)

01285 671490



**Friends of Fairford and Lechlade  
Communities**

Registered Charity Number: 1180059

## Press Release

### Funded Counselling for Young People 11-18

We are thrilled to be partnering with Cotswold Counselling to offer short term counselling sessions for young people aged 11 to 18, living within Fairford, Lechlade and the surrounding villages. To find out more and to download an application form, please see our website. [www.friendsoffairford.org.uk/grant-funding](http://www.friendsoffairford.org.uk/grant-funding)

### Footcare Funding

We are pleased to announce our new Footcare Funding stream is open for applicants. The Charity is offering funding to cover up to four appointments per year, with a qualified Footcare Practitioner at Fairford Therapy Centre. Please download and complete an Application Form from our website. For any queries please call 01285 707300. Applications now open - [www.friendsoffairford.org.uk](http://www.friendsoffairford.org.uk)

### Young at Heart Memory Club

Come along to the Young at Heart Memory Club which we happily fund. If you are interested in a monthly lunch club for people with memory problems and their carers, please contact Lorna direct for more information and to book your space 07971 929258

### Edna Dawes Lunch Club Volunteers and Drivers

The Edna Dawes Lunch Club is ideal for the isolated and lonely. We provide a sociable day out with a hot meal, activities and transport for just £10. If you are able to help at either a Monday or Wednesday lunch sessions, please contact EDLC Team Leader, Freya, 07713 607106 or email [edlc@friendsoffairford.org.uk](mailto:edlc@friendsoffairford.org.uk)

### Who are we?

Our Chairty offers a huge range of services within the local area. Please see our website or call to find out more [www.friendsoffairford.org.uk](http://www.friendsoffairford.org.uk) or 01285 707300.

### Our Nursing Team

We provide end of life care to patients wishing to die at home. Our service is available to anyone who is a patient of either the Fairford or Lechlade GPs practices, and where the District Nurse feels that the patient needs our help. To access our service a referral from your District Nurse or GP is required, who will then contact our team. We are able to provide care at home for up to eight weeks.

### Join our mailing list

Stay in touch with our news and events by emailing [admin@friendsoffairford.org.uk](mailto:admin@friendsoffairford.org.uk)



# Kempsford Parish Council

*Mrs Teresa Griffin, (Clerk), Winterwood, Whelford, Glos. GL7 4EB*

*Email: [clerk@kempsfordparishcouncil.gov.uk](mailto:clerk@kempsfordparishcouncil.gov.uk) Tel: 0781 8626158*

*[www.kempsfordparishcouncil.gov.uk](http://www.kempsfordparishcouncil.gov.uk)*

## NEW WEBSITE & EMAIL ADDRESSES

In line with recent Government Guidance, we have updated our website to a .gov.uk domain and this has resulted in new email addresses.

**Please see the 'contacts' page for new addresses.**

## PARISH COUNCILLOR VACANCY

The Parish Council is looking to fill the current vacancy by co-option.

Could this be you? Are you interested in serving your local community?

Kempsford Parish covers the villages of Kempsford and Whelford, and the hamlets of Dunfield and Dudgrove.

The Council meets monthly, usually the third Monday in the month, and meetings are generally held at Kempsford Village Hall, with Whelford Village Hall as a reserve option.

Parish Councillors volunteer their time to work on behalf of their local community. If you have lived in the Parish, or within 3 miles of it, for at least a year and are over 18, you are probably eligible (please check with the clerk for further eligibility criteria).

**You don't need previous experience**—just a genuine interest in your community and a willingness to get involved.

Training will be given by the Gloucestershire Association of Parish & Town Councils, and funded by the Parish Council, if desired.

For a copy of the Application and Eligibility Form, or any further information, please **contact the Clerk or visit the 'News' page of our website –**

**[www.kempsfordparishcouncil.gov.uk](http://www.kempsfordparishcouncil.gov.uk)**

## Listening, Learning, and Local Voices

*By Roz Savage MP, South Cotswolds*

Over the summer, I made the most of the parliamentary recess to get out and about across the South Cotswolds – **and what a pleasure it's been. Between 28 July and 28 August, I held 17 'Meet Your MP' events in town halls, village halls and open-air spots** in Cirencester and Malmesbury.

I was especially glad to speak with residents face-to-face. A big thank you to everyone who came to Fairford Community Centre on 6 August or Lechlade Memorial Hall on 21 August – your warmth and openness made them really engaging afternoons.

These informal drop-ins were a great way to meet people in the heart of their own communities. Whether in a bustling market or a quiet village hall, I valued every conversation.

Common themes emerged: access to GPs and dentists, rural transport, affordable housing, and how to support our farmers while protecting our landscapes. These are national issues, but their local impact is where we see the difference.

I also heard uplifting stories – from volunteers running food banks and youth clubs, to small business owners doing brilliant things, to neighbours tackling loneliness together. These moments remind me why I stepped into public life: to help create the conditions where communities can thrive.

**That's why I launched my new website,** [www.strongersouthcotswolds.co.uk](http://www.strongersouthcotswolds.co.uk) – a hub for local success stories, useful resources, and practical ideas.

I want to be an MP *with* the community, not just *for* it. Listening, learning, and staying connected will always be at the heart of my work – here at home, and in Parliament. Thank you to everyone who joined me this summer, and I look forward to doing it again soon.

Warm wishes,  
Roz



Email: [roz.savage.mp@parliament.uk](mailto:roz.savage.mp@parliament.uk) | Call: 01285 300555

## CONTACTS

NEWSLETTER COPY	Teresa Griffin	clerk@kempsfordparishcouncil.gov.uk	0781 8626158
COUNCILLORS	KPC Website -	www.kempsfordparishcouncil.gov.uk	
Parish Council Chair	Mark Strange	markstrange@kempsfordparishcouncil.gov.uk	01285 810635
Parish Councillor	John O'Connell	johnoconnell@kempsfordparishcouncil.gov.uk	01285 810512
Parish Councillor	Christine Nugent	christinenugent@kempsfordparishcouncil.gov.uk	01285 810306
Parish Councillor	Karen Saunders	karensaunders@kempsfordparishcouncil.gov.uk	01285 713155
Parish Councillor	Stephen Andrews	stephenandrews@kempsfordparishcouncil.gov.uk	01285 719924
Parish Councillor	Debbie Watson	debbiewatson@kempsfordparishcouncil.gov.uk	01285 810664
Parish Clerk	Teresa Griffin	clerk@kempsfordparishcouncil.gov.uk	0781 8626158
County Councillor	Dom Morris	dominic.morris@gloucestershire.gov.uk	07500894702
District Councillor	Tristan Wilkinson	tristan.wilkinson@cotswold.gov.uk	
District Councillor	Helene Mansilla	helene.mansilla@cotswold.gov.uk	
Constituency MP	Dr Roz Savage	roz.savage.mp@parliament.uk	
CHURCH			
	Rev Caroline Symcox	carolinesymcox@googlemail.com	01285 712611
PCC Secretary	Rosemary Andrews	rosemary.andrews@btinternet.com	
Choir	Mrs Cathy Stanford		01285 713033
Church & Hand Bell	Sally Strange		01285 810635
KEMPSFORD VILLAGE HALL COMMITTEE MEMBERS			
Chair & Trustee	Ian Housley	To contact any Committee Member email -	
Secretary & Trustee	Kathy Woodward	infokempsfordvillagehall@kempsford.net	
Community Garden	Jacqui Howlett		01285 712268
WHELFORD VILLAGE HALL			
Bookings	Sue Griffin	374croft@gmail.com	01285 712979
SCHOOLS			
Kempsford School	Helen Seward (Head)	admin@kempsford.gloucs.sch.uk	01285 810367
School Governors		chair@kempsford.gloucs.sch.uk	01285 810875
Farmors School	Matthew Evans (Head)		01285 712302
COTSWOLD DISTRICT COUNCIL		(including Bulk Refuse)	01285 623000
GLOUCESTERSHIRE COUNTY COUNCIL		Switchboard	01452 425000
		Adult Social Services	01452 426868
		<b>Children's Social Services</b>	01452 426565
GLOUCESTERSHIRE HIGHWAYS		highways@gloucestershire.gov.uk	08000 514 514
WILTSHIRE HIGHWAYS		northernhighways@wiltshire.gov.uk	0300 456 0105
Royal British Legion	Mr A Hill		01285 810035
SSE		Reporting of power cuts	105 or
Thames Water			0800 316 9800
Environment Agency		Floodline - 0845 9881188	03708 506 506
Non-emergency	Police		101
NHS 111 Service		(when less urgent than 999)	111
Hilary Cottage Surgery			01285 712377
FRIENDS OF FAIRFORD & LECHLADE COMMUNITIES - Serving Fairford, Lechlade & surrounding villages			
Administrator	Kerry	admin@friendsoffairford.org.uk	01285 707300

Raising money for improvements at  
**St Mary's** Church & Kempford Village Hall

# Live Music Night

with Event Bar

COMFORT BREAK

PLUS GUEST BAND

TAKING HITS

HITS FROM **70's**

TO 2025

SATURDAY 18TH OCTOBER

Kempford Village Hall

Doors open 7.00pm

7.30pm start



**Tickets limited**

**ADVANCE TICKETS: £10 with welcome drink**

Ann: 07760 272224

Jacqui: 01285 712268